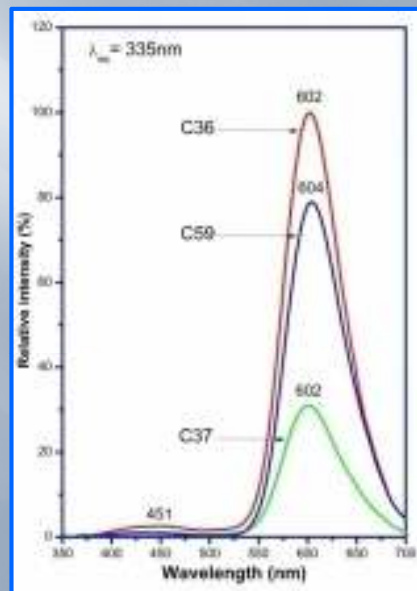
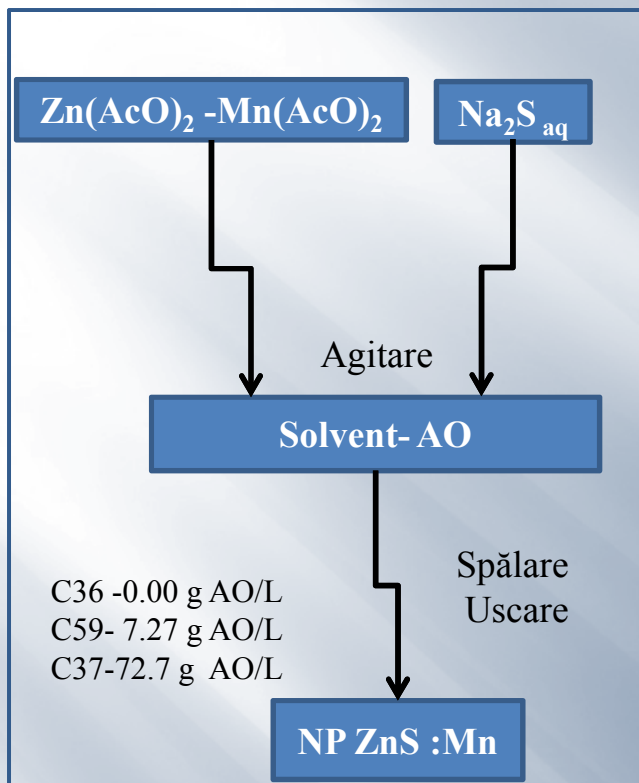
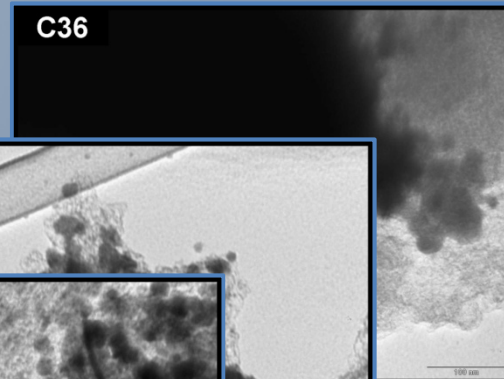


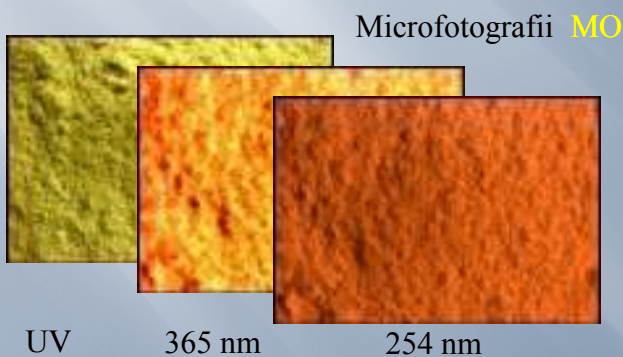
# Sinteza si proprietatile unor nanoluminofori NP- ZnS:Mn<sup>2+</sup> -tehnica SimAdd



Spetre PL (emisie)



Microfotografii (TEM)



Concentratia % at.Mn (ICP-OES)

cod	introdus	determ.	Grad co-ppn.
C36	8	0.25	3.10
C59	8	0.74	9.25
C37	8	0.11	1.38

Parametri microcristalini (XRD)

cod	a=b=c [nm]	V [nm <sup>3</sup> ]	D <sub>eff</sub> [nm]	$\langle \epsilon^2 \rangle^{1/2}_m \times 10^2$
C36	0.5413	0.1587	2.96	0.9456
C59	0.5413	0.1586	2.96	0.9455
C37	0.5415	0.1588	3.64	0.8062